

# iDECORAMA

magazine.idecorama.com

NOV 2017 ₹200

COVER STORY

## Red Dot Design Awards 2017

AMAZING ABODE  
**Aarti Aggarwal's Residence**

DESIGN TALES  
**Gauri & Vaibhav Shah, Facilis**

EXCLUSIVE INTERVIEW  
**Pritesh Meisheri, Prit Designers**







# *Inspired by nature, perfected by design*

Using timber as a primary source of inspiration, this amazing residential space, designed and owned by Aarti Aggarwal of Knock On Wood, is a perfect blend of traditional and modern aesthetics.

Imagine a stunning abode, on the purlieu of a luscious green neighbourhood and a serene lake, blending all the way into the cordial hands of mother-nature, designed and crafted on the basis of South-East Asian style of architecture and contemporary design accord. Tantalizing, you could argue. But that's exactly what Aarti Aggarwal, founder of Knock-On-Wood (KNW) and the key designer of this residence had in her mind while penning down the design notes for this masterpiece. In fact, Knock on Wood, the bespoke furniture brand that Aarti runs, is the perfect example of an exquisite combination of Indian art with minimalistic contemporary design.

## **Styling and Sizing**

"Designed and built on the concept of Southeast Asian styling, the house for a multi-generational family is built on the premises of the surrounding green environs that necessitated a design which would allow for a direct connection to the built volume and indoor spaces with the nature" says Aarti. The house brings out a profound



Founder and Principal designer, Aarti Aggarwal





Teak panelled walls with brick and wooden flooring

“The house brings out a profound rustic reminiscence of the golden age, where the architectural innovations were a prominent process of perfection and secretive innovations”

rustic reminiscence of the golden age, where the architectural innovations were a prominent process of perfection and secretive innovations. Aarti, who studied domestic design from the University of Arts, London, has had her ways with the minimalistic contemporary designs that usually take a nominal millennial breath away.

“The abundant greenery around makes one feel set within a forest, rather than being amidst the hustle-bustle and chaos of a city.” Located in one of the prominent northern sectors of Chandigarh, the house is built on a plot size of 5-canal with beautiful gardens on either side of the plot, with a lake gushing through the silhouettes of the plot.

### Décor and Lighting

The house has been designed to optimize natural lighting and ventilation, optimizing a unique blend of tradition and modernity. The central courtyard are reminiscent of the traditional Indian style of architecture, where four halls are joined together with a central, open-to-sky courtyard. Personalizing it, the courtyard is augmented with a decorative wooden fretwork panel and a grandeur chandelier. The wooden fretwork panels can be spotted almost everywhere, including the ventilation







“ The house has been designed to optimize natural lighting and ventilation, optimizing a unique blend of tradition and modernity. The central courtyard are reminiscent of the traditional Indian style of architecture, where four halls are joined together with a central, open to-sky courtyard ”



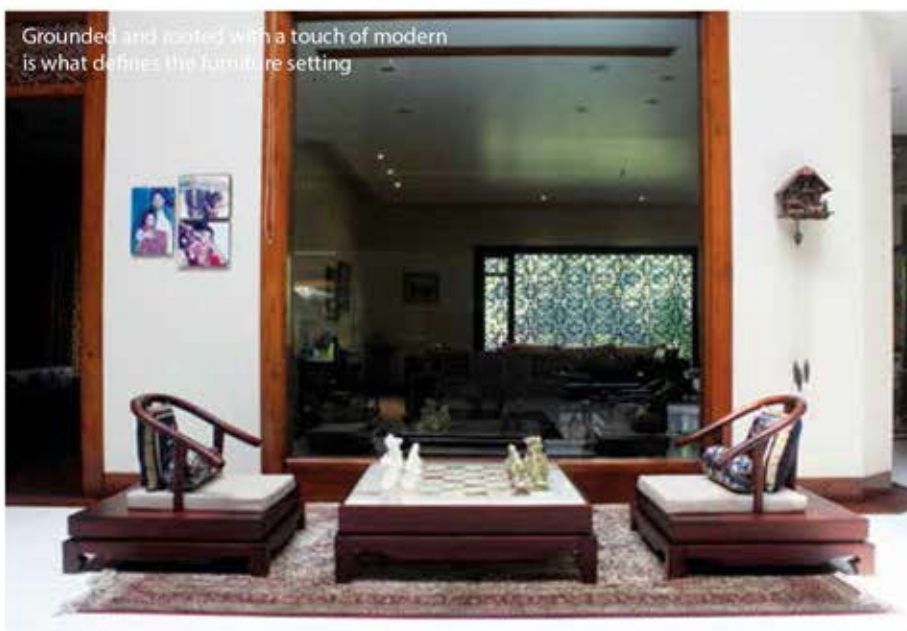


The courtyard is augmented with a decorative wooden fretwork panel and a grandeur chandelier





An eclectic palette of colours has been used all the way from seating pillows to the curtain design



Grounded and rooted with a touch of modern is what defines the furniture setting

panel above all doors, except one. That one door is an exception, mind you. We'll loom to that in a while.

"The overall design intent was to achieve simple, clean styling and open spaces that carry forward the visual aesthetic as well" The teak panelled walls with brick and wooden flooring break away from the monotony of typical bathrooms, manifesting them as spaces of delight. A large, open space on the first floor has a feature wall that has been painted on by a 'Madhubani' artist with a door that is about a century old. A door is said to be the gateway of light and darkness, day and night, or say, a perfect beginning and a catastrophic ending. So if you ask me the significance of a door, I'd say, it's



“The overall design intent was to achieve simple, clean styling and open spaces that carry forward the visual aesthetic as well.” The teak paneled walls with brick and wooden flooring break away from the monotony of typical bathrooms, manifesting them as spaces of delight”

substantial. The light passing through this fretwork creates an interesting pattern on the white Thassos flooring, creating a play that is theatrical, yet subtle in nature.

“Each piece has been chosen with care, instead of conforming to a particular style. The artworks and carpets have been picked up over the years. Grounded and rooted with a touch of modern is what defines the furniture setting inside”, Says Aarti. An eclectic palette of colours has been used all the way from seating pillows to the curtain design. Aesthetically speaking, lay your eyes on a spot of choice and all you see is a knot of rejoice, dancing all the way through the chimes of colours. Very few curtains are used throughout the house, just the ones that are utterly mandatory. Other spaces are decked with wooden

fretwork panels and glass. Even while standing in the front, one can see through the house, right up to the tree in the back garden. Therefore, there is a deceptive sense of transparency along with the right amount of privacy that is required.

“My favourite space is the room with the Madhubani painting. The way in which the space represents itself is like a doorway to another world, where one could find his zone of repose and introspection”, says Aarti when asked about her favourite space in the house.

The ultimate grandeur of this residential project is, of course, the use of timber, ventilation and natural lighting techniques inspired by traditional design and perfected by modern aesthetics. ▢

Text Courtesy: Team iDecorama

This space transports one to another world, where one could find his zone of repose and introspection.

